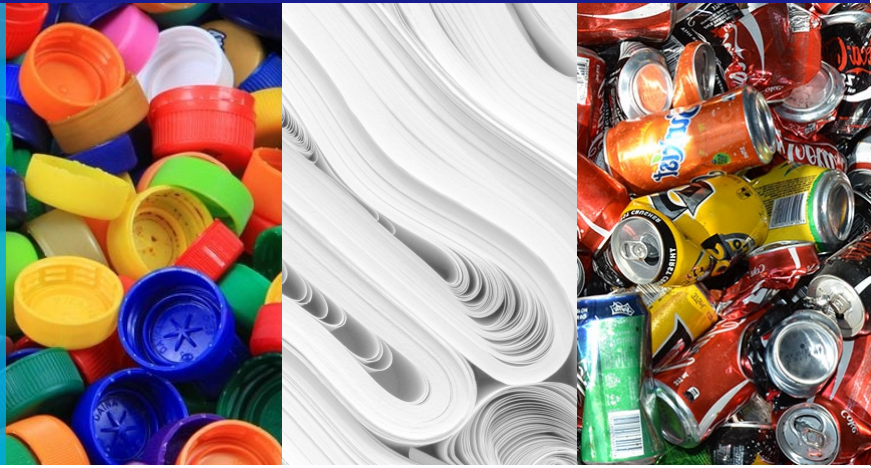




Frequently Asked Questions



What is difference between Tops to Tags and Give2Green?

Give2Green will still focus on asking corporates, schools, and community programmes to bring in bottle tops, aluminium cans, and white office paper, but now they get the option of either sanitary pads or wheelchairs, which can then be distributed to those in need.

So why the change?

Well for two reasons. Firstly, there is a change in waste legislation where bread tags are no longer being accepted as part of the waste collections, but secondly, and more importantly, we really want to take a strong stand in promoting women's health, education, and empowerment. The addition of donating free sanitary pads to people in need is our way of helping to find a sustainable way in which we can collectively improve the lives of women and girls in our country.

Why sanitary pads?

Did you know that access to sanitary pads is still a real barrier for women and girls in this country. Far too many women, and girls, lack access to sanitary pads, and this has led to absenteeism in schools, and at work, and can also affect their education and income generating activities – all of which has a negative impact overall economic participation. And we want to help.

Through this programme we also hope to provide women the support they need to go about their daily activities, with confidence and a sense of dignity, and empower girls to stay in school and pursue their educational and career goals.

So, Give2Green will now focus getting people to bring in bottle tops, aluminium cans, and white office paper (no bread tags) in return for sanitary pads or wheelchairs, which can then be distributed to those in need.



So how does it work?

The Give2Green programme will work on the same premise as Tops to Tags. However, we changed the recyclable waste which can be collected, which ultimately means participants will receive a certain number of free sanitary pads, or the option of wheelchair, to donate to a cause or beneficiary of their choosing.

So, for every 250kgs of bottle tops or white office paper brought in, 60 packets of sanitary pads will be donated to the Interwaste employee. Similarly, 50kgs of aluminium cans will directly relate to 60 packs sanitary pads being donated.

In terms of wheelchairs, these can still be obtained through the recycling of either 500kgs of plastic bottle tops, 120kg's of cans or 550kg's of white office paper. The choice is yours.

What is the process?

- 1 Collect as many bottle tops, aluminium cans, and white office paper as you can.
- 2 Deliver to Interwaste branches on Wednesdays or Thursdays: 8:00 to 12:00.
- 3 Weighing will be done on-site at the Interwaste depots.
- 4 If all is in order and stock available, collection of the pads or wheelchair can be done within 2 weeks.

How do I get involved?

Get involved. Collecting your waste from home and bring it in to our depots - and don't forget tell your friends and family all about the newly launched Give2Green!

Where can I drop off?

Drop-off's are accepted at any of the following Interwaste depots; Durban, Cape Town, Nelspruit, Germiston (Gauteng). Please visit our website for the exact address.

For more information visit

www.give2green.co.za

INTERWASTE

A proud  Séché environnement company

GIVE 2 GREEN

A proud INTERWASTE initiative